



School
Holiday
Program

Welcome to the Saddle Up School Holiday Program!

You're in for a unique experience, with plenty of horasing around. Here's a quick rundown of what you need to know before your day at Pakenham Racecourse

Daily activities

For further information about the daily schedule, please find attached the **Saddle Up School Holiday Program Daily Activity Timetable** and **Activity Map**. To take full advantage of the program it's best to arrive from 8:30am and stay until the end of the day at 5:30pm.

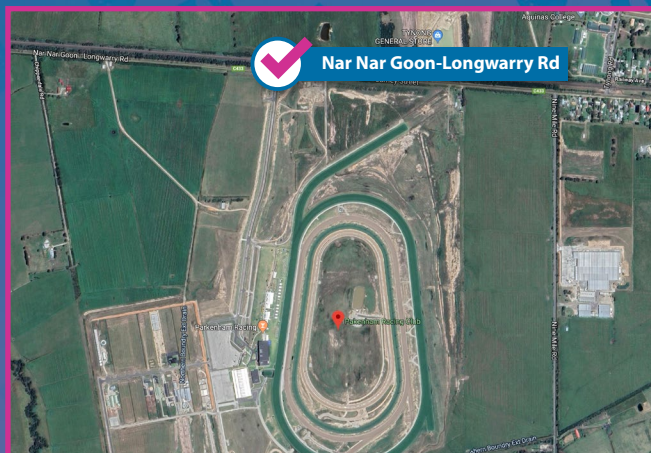


Please note: The Saddle Up School Holiday Program activities are subject to change dependent on extreme weather conditions and unforeseen circumstances. It is our duty of care to ensure the health and well-being of all children, horses and staff participating in the program is paramount.

Access to the Racecourse

To access the Pakenham Racecourse please enter via the Main Racecourse Entrance Gate which is accessible from Nar Nar Goon-Longwarry Road. Please refer to the map.

Saddle Up directional signage will guide you to the free parking near the entry. Signage will then provide further directions to the Saddle Up School Holiday Program sign in/out registration area inside the Skyline Suite at Pakenham Racecourse.



What to Bring

You are encouraged to bring the following items for your child on the day:

- ☐ A drink bottle to refill throughout the day.
- ☐ A packed lunch for the main lunch break and snacks for morning and afternoon breaks.
- ☐ Please avoid foods that may contain nuts.
- ☐ Suitable spring weather clothing and items such as sun hats, sunscreen, warm clothing and something for wet weather.

Don't forget that at pick up, you'll have the opportunity to have your photo taken with your child and the host club's iconic trophy, which will be located near the sign in/out registration area.

Photography/Filming Consent Form

During the course of the Saddle Up School Holiday Program, photographs and/or videos may be taken by a professional service provider engaged by Racing Victoria or Racing Victoria staff.

Racing Victoria respects the privacy of children.

Accordingly, please complete the attached form, and bring it with you when you sign in on the day, advising whether you consent for your child/children to participate in photographs and/or filming during the program, and for those images to be used and/or disclosed by Racing Victoria for the purposes described within.

We will endeavour to take a group photo on each day of the program which will be shared with all on racingvictoria.com.au/saddle-up.

Queries

If you have any further queries in relation to the Saddle Up School Holiday Program, don't hesitate to get in touch at info@kellysports.com.au or call (03) 9384 2204.

Steve Martin, Director of Kelly Sports, will be your contact on the day of the program and can be reached at 0418 523 282.

We look forward to welcoming you to the Saddle Up School Holiday Program. It's going to be a great day on the track.

See you soon!



**Racing
Victoria**

PAKENHAM
RACING CLUB INC



Please note: For the safety and security of children and staff throughout the day, parents and guardians will not be able to stay on site while the Saddle Up School Holiday Program activities are in operation.